

**WEST.**



**FIXED**

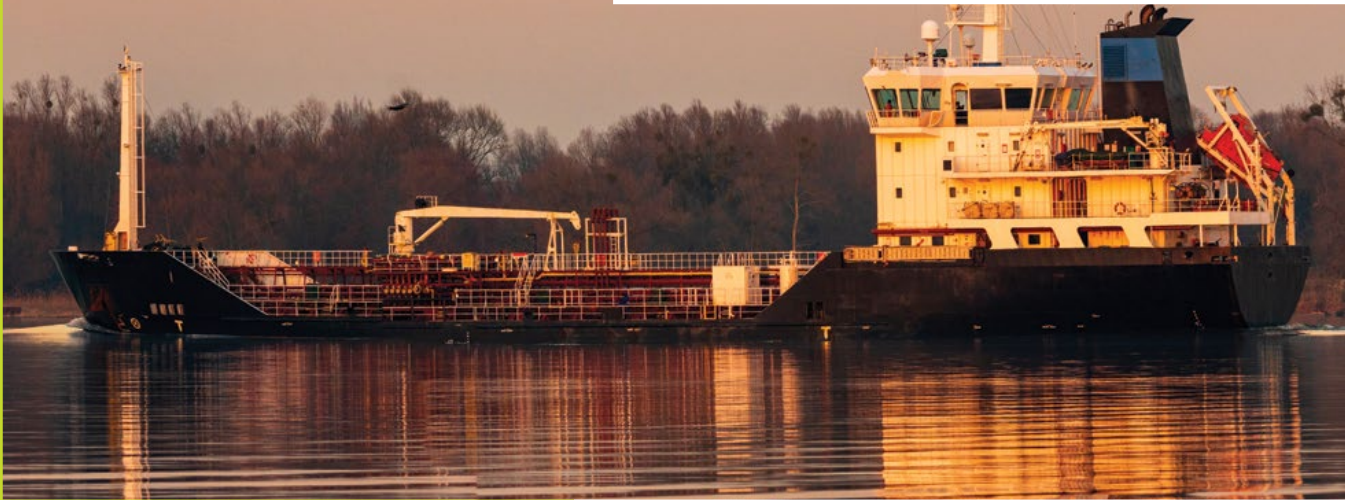
## Introduction

To meet the needs of operators of smaller vessels, the West of England offers a tailor-made fixed premium liability insurance product offering P&I cover in accordance with Club Rules, coupled with full claims handling support.

This provides shipowners a wide scope of cover whilst maintaining the high level service capability for which the West of England is renowned, including access to a worldwide network of correspondents and experts together with the ability to offer Club letters of guarantee.

Shipowners operate in an increasingly litigious environment where liability exposure continues to become ever more burdensome. The scope and structure of our fixed premium owner's P&I cover has therefore evolved in line with their changing needs.





## Who can be insured?

Our global product is designed for small ships and inland craft.

Types of ships which are particularly suited to our fixed cover product include:

Tugs	Small container and general cargo ships
Barges	Small clean and dirty tankers
Offshore units including OSV's, crew and utility boats	Ro-Ro
Dredgers	Fishing boats
Small bulk carriers	Small passenger vessels

The product is suitable for most types of trade, whether it be liner operations, or conventional tramp market chartering. Please note that US flagged ships are the only exclusion of this facility.



# Fixed Premium P&I Cover

## P&I Risks

The shipowner is insured for a variety of risks which include but are not limited to:

- Injury, illness or death of seafarers, passengers and other persons on board
- Diversion
- Life salvage
- Collision and FFO (Fixed and Floating Object) damage
- Pollution
- Customary towage
- Wreck removal
- Unrecoverable GA contributions
- Fines and civil penalties
- Confiscation of vessels

**Our focus is on small craft which usually means less than 10,000 GT**

- Cover placed as a single package with one policy
- Single aggregate limit per incident
- We offer variable limits up to USD 1 billion
- Ability to tailor the product to specific heads of cover which best accommodate a shipowner's needs

## We also issue:

- PLR certificates
- MLC certificates
- CLC
- Bunker Convention and
- Removal of Wreck blue cards

Our guarantees and blue cards are accepted worldwide by all flag states



## Extended liability covers for Owners:

The Club also offers a wide range of additional cover for liabilities which fall outside the Club's normal P&I Rules, which can be dovetailed with the owner's fixed policy to provide an extensive, seamless insurance product tailored to their individual needs.

## These can include:

- Extended Cargo liabilities
- Cargo liabilities under contracts on terms less favourable than Hague/Hague Visby
- Extended crew liabilities
- Liability to pre-delivery crew
- Contractual liability cover
- Extended towers liability
- Specialist Operations liabilities such as construction, dredging, pipe-laying, cable-laying or well-stimulation
- Salvors' liability
- Obstruction of waterways for inland craft

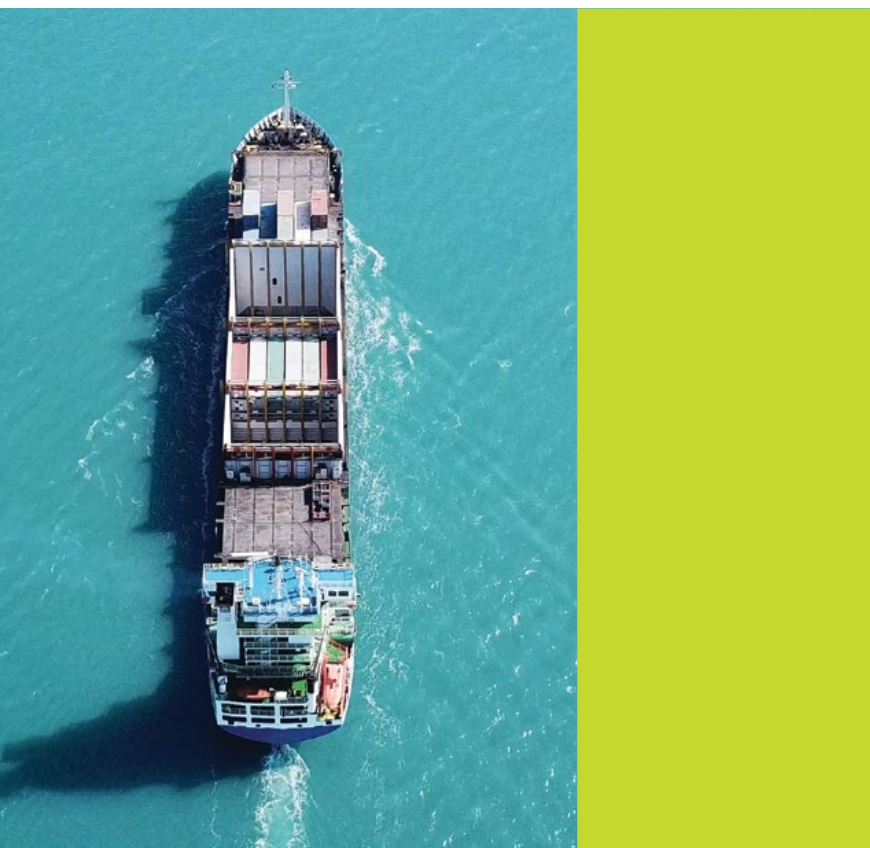
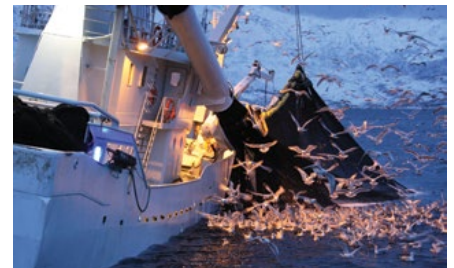
# Additional Benefits

## Claims:

- With a permanent staff of over 150 world-wide and a network of partners and subcontractors, we provide an international service of the highest quality from an experienced and dedicated team
- Owners using this cover will have the benefit of full access to this expert team of claims handlers and global network of correspondents
- Claims handling services are provided on a 24-hour basis through any one or more of the offices in London, New York, Hong Kong, Singapore and Greece
- Our Club guarantees are accepted worldwide and can be provided at short notice and at no cost

## Loss Prevention:

- Owners using this cover will also have access to our highly respected Loss Prevention department
- With a combined total of over 150 years' experience as senior Deck and Engineering officers, including as Captains and Chief Engineers, on almost all vessel types and in a variety of shore based management positions, the department is ideally placed to offer guidance on issues that shipowners may be facing in trading their vessels
- The Loss Prevention department is a resource which our shipowners are actively encouraged to utilise, be it for technical, operational, risk management, advice or assistance
- Extensive Loss Prevention information and materials are also available on the Club's website



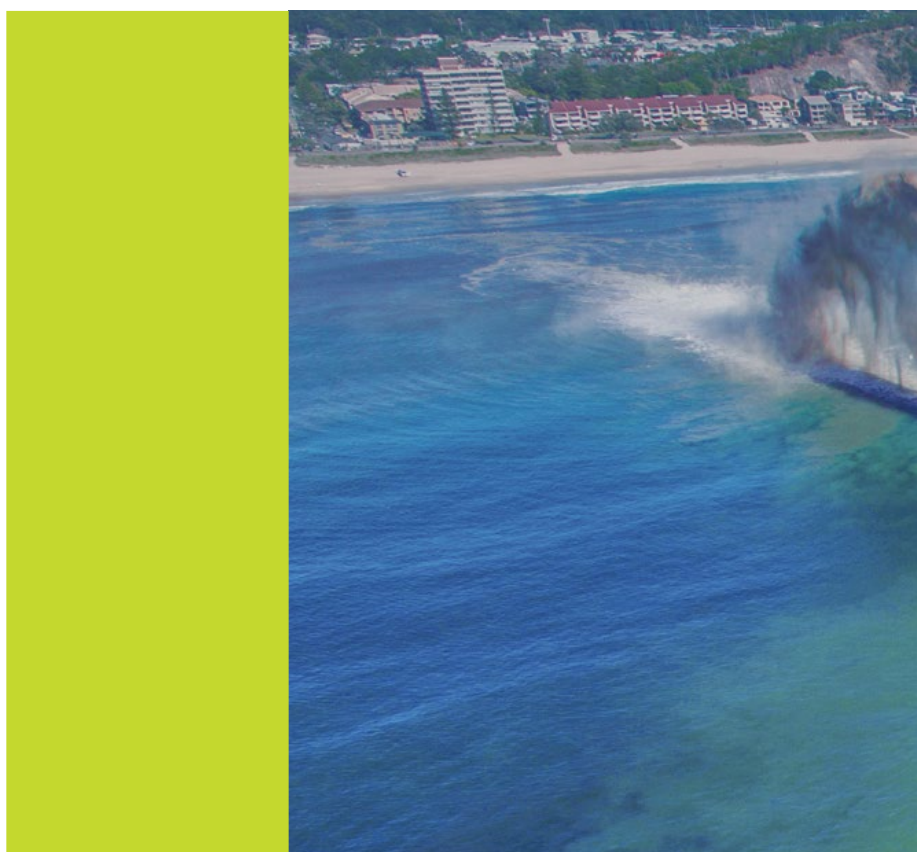
## Why West of England?

The West of England is a leading insurance provider to the global shipping industry, combining financial strength with outstanding service to help its Members meet the continually evolving liability environment in which shipowners, operators and charterers operate.

We also safeguard and promote our Members' interests in many other areas of their business. We believe that protection for our Members is as important as the indemnity insurance we offer. To provide both we are responsive to our Members' needs and proactive in looking after their interests, enabling them to more easily achieve their business goals.

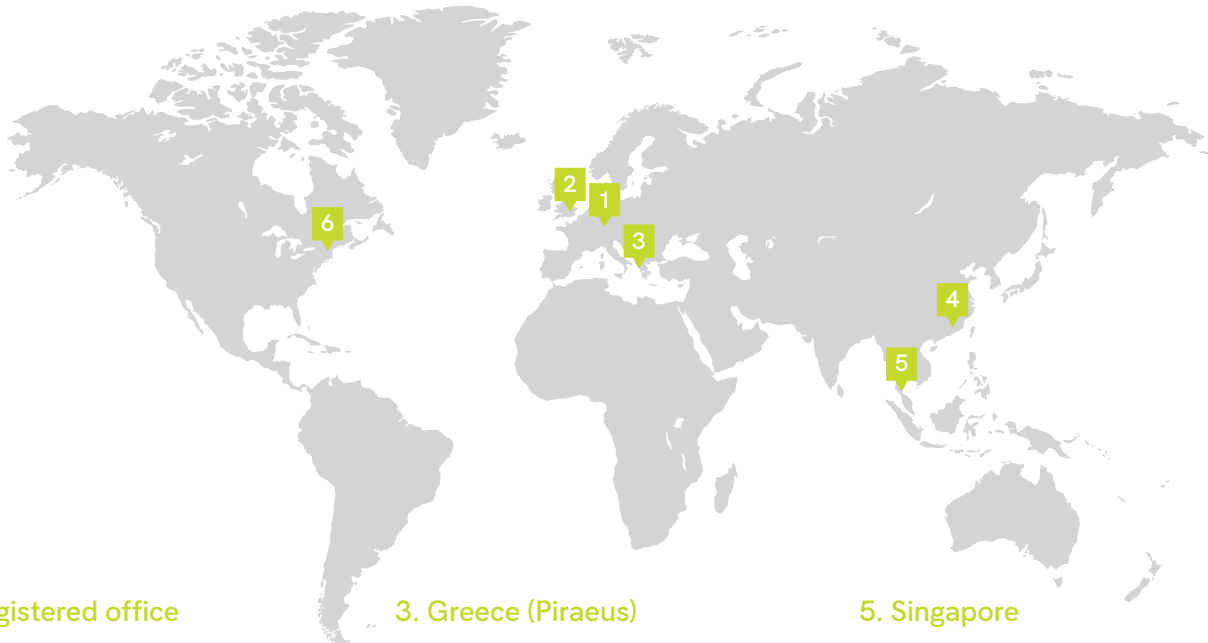
### Our strengths

- An international Club with a global membership
- A worldwide office network providing dedicated underwriting, claims and loss prevention service to our Members
- A Member of the International Group of P&I Clubs



# Global Coverage

Providing localised services to the world-wide membership.



## 1. Registered office

31 Grand-Rue  
L-1661 Luxembourg  
G.D. Luxembourg  
T +352 4700671

## 2. UK (London)

One Creechurch Place  
Creechurch Lane  
London EC3A 5AF  
T +44 20 7716 6000

## 3. Greece (Piraeus)

Akti Miaouli 95  
1st Floor  
185 38 Piraeus  
T +30 210 4531969

## 4. Hong Kong

1302 China Evergrande Centre  
38 Gloucester Road  
Wanchai, Hong Kong  
T +852 2529 5724

## 5. Singapore



77 Robinson Road  
Level 15-01, Robinson 77  
Singapore 068896  
T +65 6416 4890

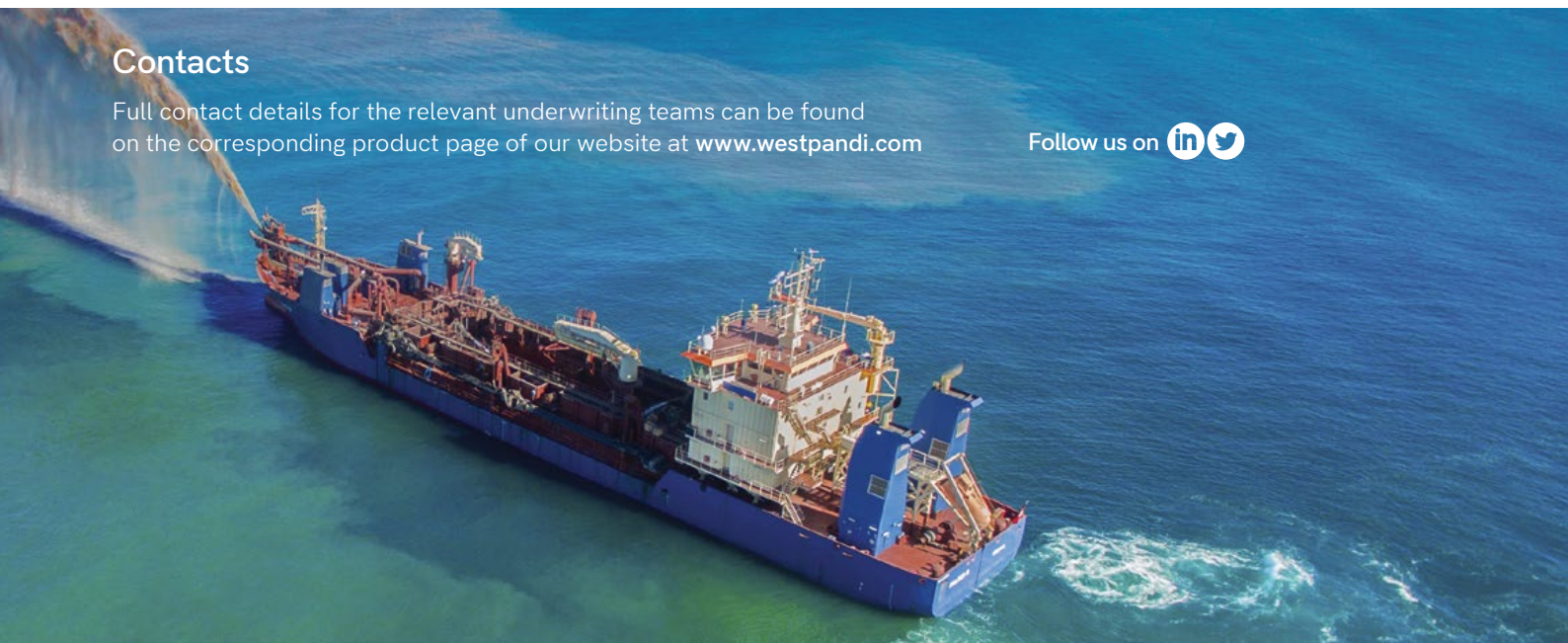
## 6. USA (New York)

1350 Avenue of the Americas  
New York  
NY 10019  
T +1 917 733 2584

## Contacts

Full contact details for the relevant underwriting teams can be found on the corresponding product page of our website at [www.westpandi.com](http://www.westpandi.com)

Follow us on  





**WEST.**

The West of England Ship Owners Mutual Insurance Association (Luxembourg)

UK office One Creechurch Place, Creechurch Lane, London EC3A 5AF

Tel +44 20 7716 6000 Email [mail@westpandi.com](mailto:mail@westpandi.com) [www.westpandi.com](http://www.westpandi.com)

Follow us on  